

Booth Installation Instruction

TWO WALLS
SKU:EVBDTW-250X200-R

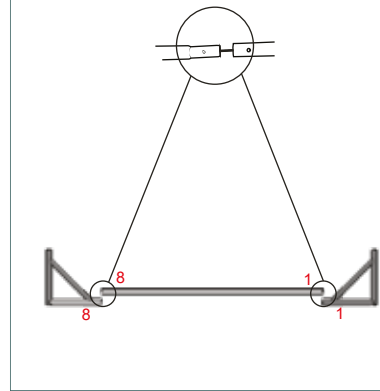
EZEXPO
sa.ezexpo.com

Backdrop Installation Instruction

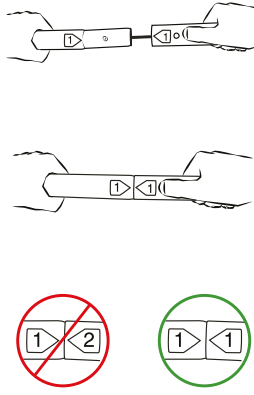
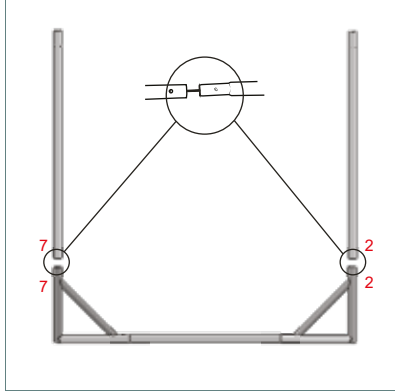
SKU:EVBDTW-250X200-R



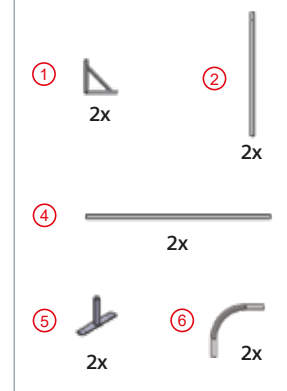
STEPS 1



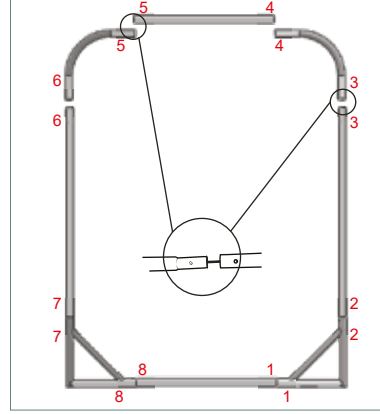
STEPS 2



PARTS



STEPS 3



ASSEMBLY

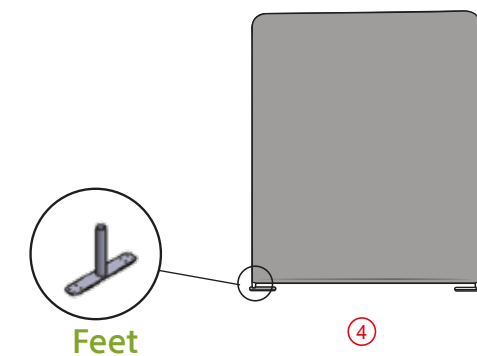
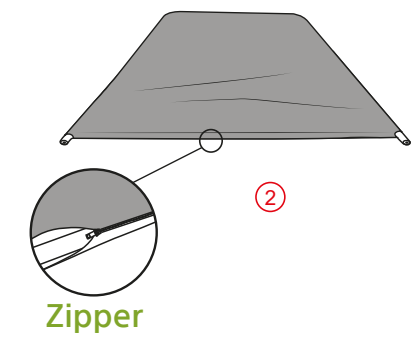
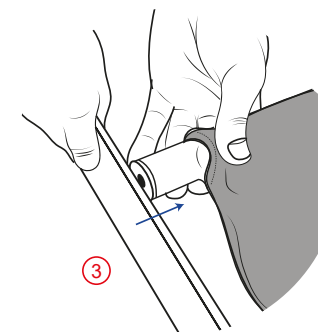
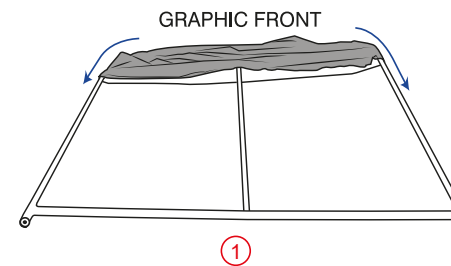


2

EZEXPO

Formulate Straight Fabric Display

Attaching Graphics



Contact Us :

3995 Uthman Ibn Affan Road Al Wahah,
Riyadh 12445 , Al Wahah square
Saudi Arabia

Phone or Whats-app : +966 -112425646

sa.ezexpo.com

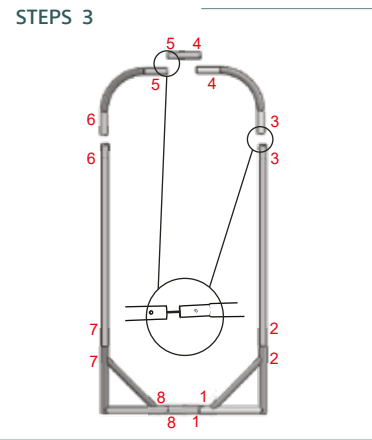
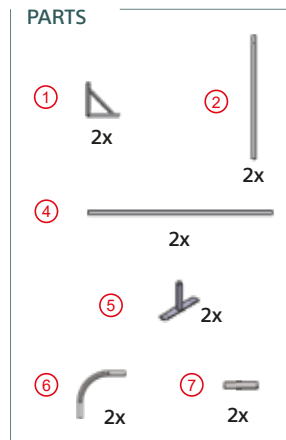
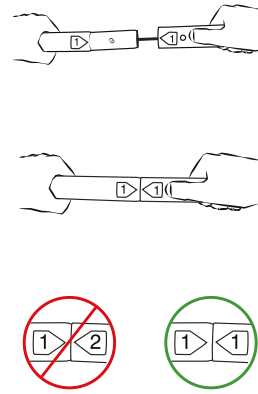
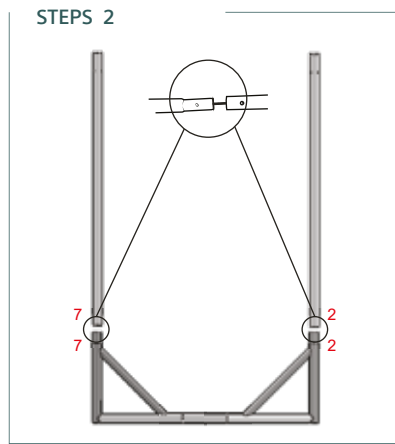
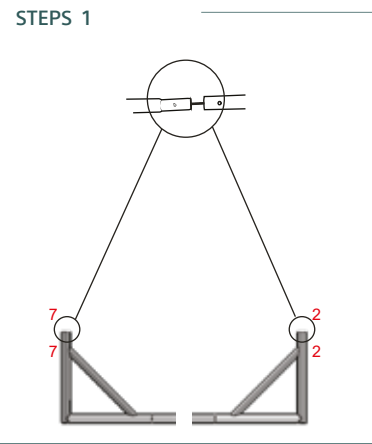
TWO WALLS | SKU:EVBDTW-250X200-R

3

EZEXPO

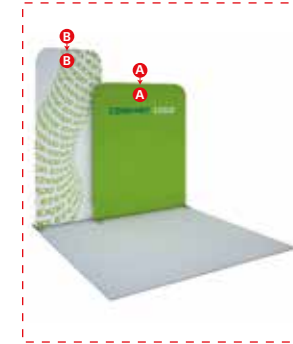
Backdrop Installation Instruction

EVBDTW-300X120-R

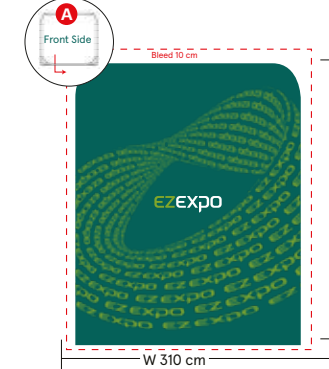


4

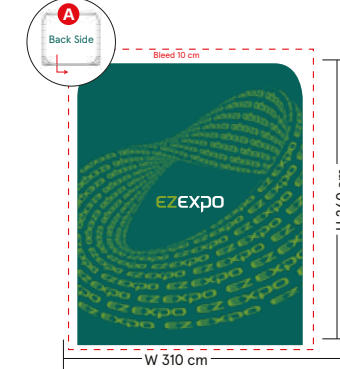
Graphics & printing Installation



Perspective



Front Side



Back Side



Front Side

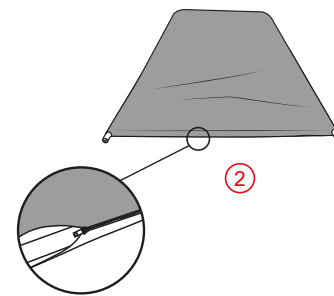
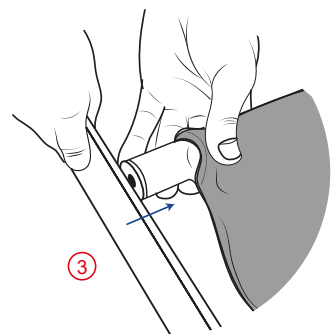
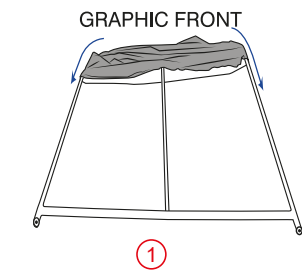
- Notes :**
- Please Use CMYK Mode For best Color Maching Check all scans are CMYK (not RGB)
 - 70 - 100 dpi at the overall graphic layout size.
 - Be aware of Safe Visible Area and keep important images and text inside this line.
 - Convert all text to outlines before saving finished artwork file
 - File Formats must be in: Photoshop (.psd) Illustrator (.ai) - Acrobat (.pdf) - Other (.tif, .eps)
 - Counter:
 - The graphic wrap is attached to the frame with a combination of the special one piece panel strip and magnetic tape.

6

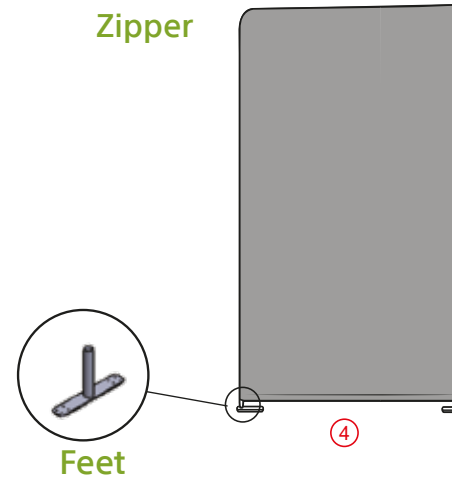
TWO WALLS | SKU:EVBDTW-250X200-R | SKU:EVBDTW-300X120-R

Formulate Straight Fabric Display

Attaching Graphics



Zipper



Feet

5

TWO WALLS | SKU:EVBDTW-300X120-R

TWO WALLS

SKU:EVBDTW-250X200-R



7